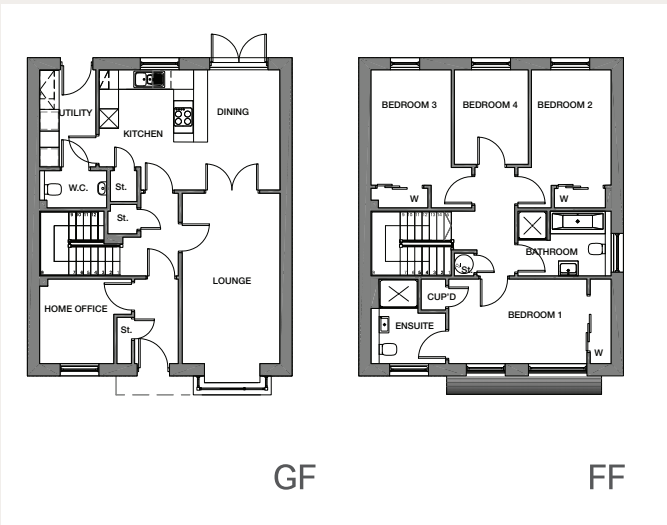


**ORMAIG (K1, K2)**

Detached

ILLUSTRATED FINISH IS K2



**GROUND FLOOR PLAN**

Living Room	5251 x 3011mm
Kitchen/Dining	5584 x 3682mm
Utility	2992 x 1735mm
W.C.	1150 x 2065mm
Home Office	2586 x 2286mm

**FIRST FLOOR PLAN**

Bedroom 1	4261 x 2606mm
Ensuite	2300 x 1700mm
Bedroom 2	3560 x 2457mm
Bedroom 3	3560 x 2475mm
Bedroom 4	2913 x 2279mm
Bathroom	2877 x 2000mm

Please note images show example external finishes. Individual plot finishes vary – please ask our Sales advisor for specific plot external detailing.