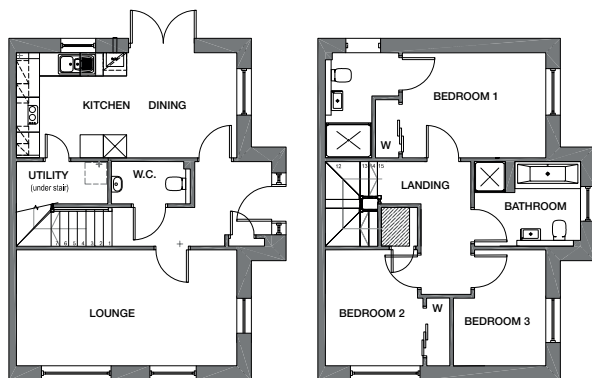


ACHMORE (E1, E2, E3)

End Terrace available

ILLUSTRATED FINISH IS E3



GF

FF

GROUND FLOOR PLAN

Living Room	5700 x 3000mm
Kitchen/Dining	5700 x 2717mm
Utility	2065 x 1093mm
W.C.	2363 x 1093mm

FIRST FLOOR PLAN

Bedroom 1	3720 x 2717mm
Ensuite	1812 x 1204mm
Bedroom 2	3000 x 2524mm
Bedroom 3	3000 x 2386mm
Bathroom	2743 x 2188mm

Please note images show example external finishes. Individual plot finishes vary – please ask our Sales advisor for specific plot external detailing.